

A N I M A L S



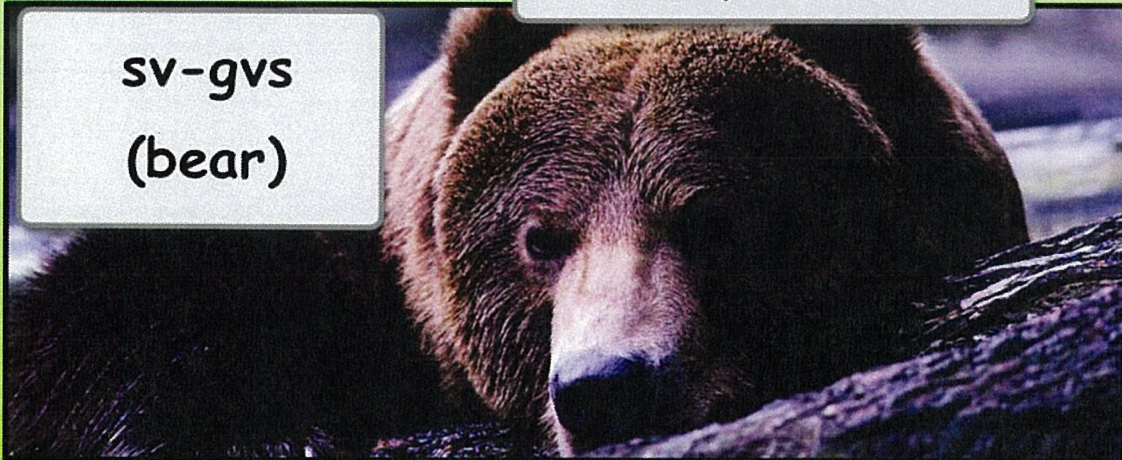
k'wee-lhin'-chu
(frog)



naa-ghe'-kvm's
(chipmunk)



ch'aa-wee-yas-na
(squirrel)



sv-gvs
(bear)

This is a (*animal*).
Dii (*animal*).

I see a (*animal*).
(*animal*) ghvsh-'i~'.



lhaa-ghvsh
(snake)

k'aa-t'vsr
(ant)



ts'ee-ntelh
(turtle)



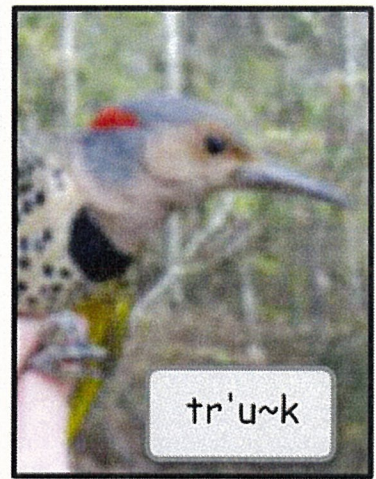
Srii-na ch'ee-yash-'e



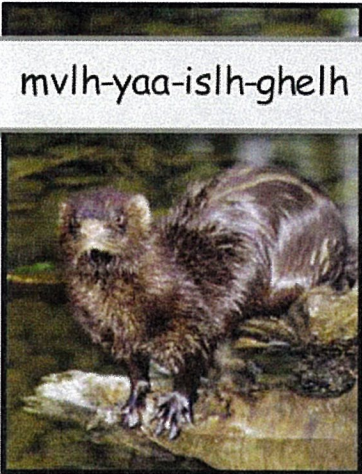
Naa-ghaa-t'u'-ne



Chutlh-chak-ne



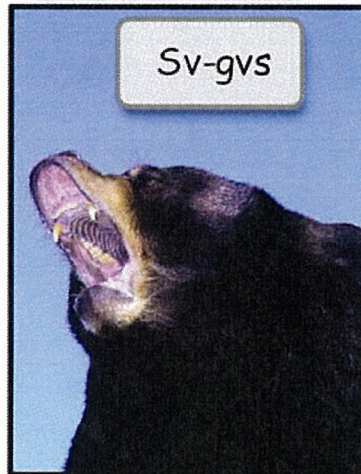
tr'u~k



mvlh-yaa-ish-ghel'h



mvn-lhts'ay



Sv-gvs



chvs-naa-chu



me'-chan-tr'vtlh-ni



Des-chu



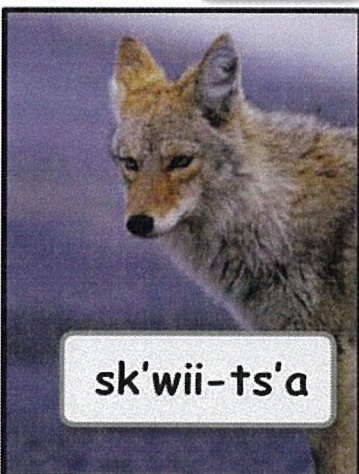
K'wvs dvtlh-ghvtlh



Ghit-ts'ay-sraa-de



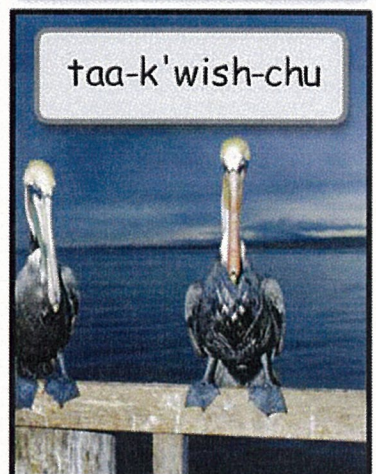
ch'uu-k'et-ni



sk'wii-ts'a



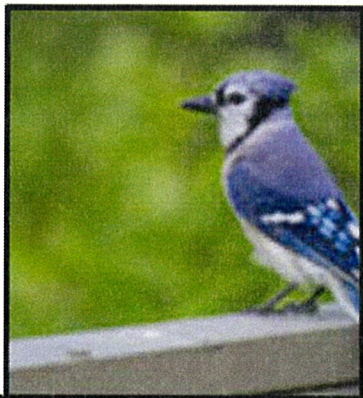
Naa-ghaa-srii-ni



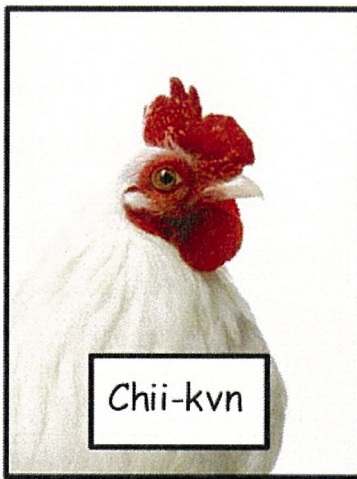
taa-k'wish-chu



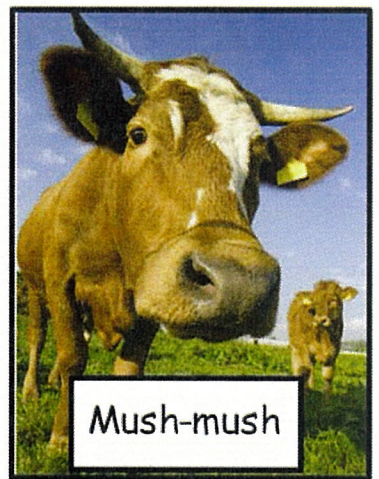
Srii-na ch'ee-yash-'e



Ghit-ts'ay-sraa-de



Chii-kvn



Mush-mush



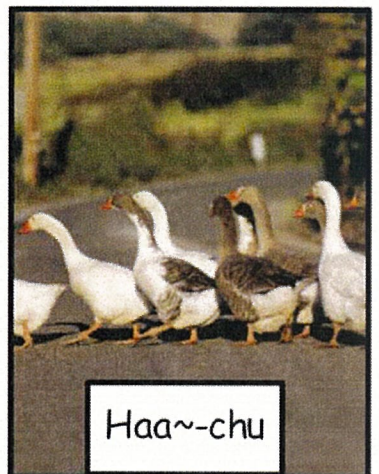
Kaa~sra



Des-chu



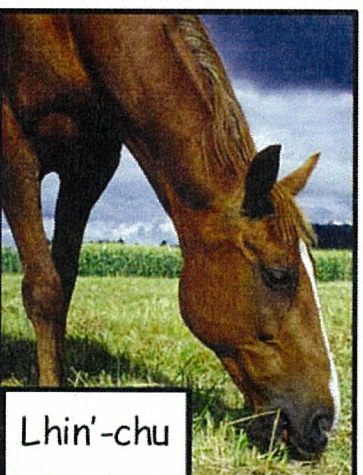
Naa-ghaa-srii-ni



Haa~chu



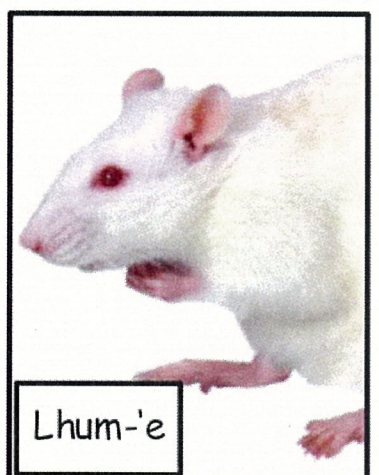
Chutlh-chak-ne



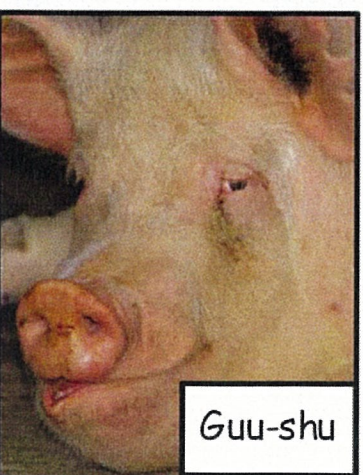
Lhin'-chu



K'wvs dvtlh-ghvtlh



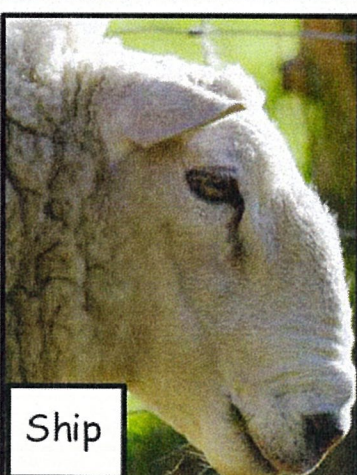
Lhum-'e



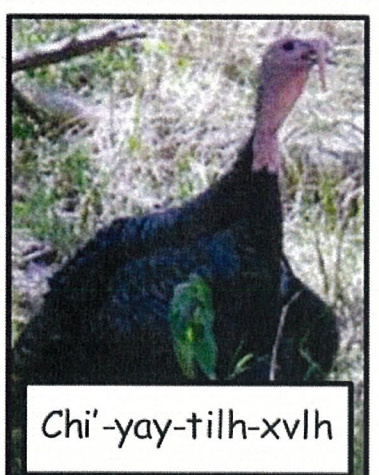
Guu-shu



Mish-ki



Ship



Chi'-yay-tilh-xvlh